



# Model 6310/VA

## Four Channel Vibration Analyzer

### Key Features at a Glance

- On-machine Analysis collecting and displaying real-time data
- 4-Channel Data Acquisition plus Keyphaser
- Transient Data Capture Mode enabling orbits, time waveform, FFT, bodé, polar, waterfall and shaft centerline plots.
- High Resolution Color Screen
- Lightweight (6.75 lbs)
- Compact (10.5" x 8.5" x 2" deep)
- Easy-to-use Menu-driven Interface
- Upgradeable Design

### What's New

- Optional Transducer Accessory Kit
- Frequency Band Alarms/ Reports
- Two Plane Balancing Routine

### 6310/VA

The 6310/VA is Windrock's four (4) channel vibration analyzer. The /VA combines the capabilities of a 4-channel data collector, oscilloscope, spectrum analyzer and transient data recorder into one handheld, battery operated, portable instrument.

The /VA can be provided as a stand-alone vibration analyzer or as an upgrade to the 6310/PA, Windrock's performance analyzer for reciprocating machines. A 6310/PA/VA analyzer combines all of the analysis capabilities for both reciprocating and centrifugal machinery into one powerful instrument.

As a 4-channel simultaneous data collector, the /VA can record and display vibration and/or pressure time-base waveforms from accelerometers, velocity sensors, proximity transducers and dynamic pressure sensors. However, the /VA is much more than a data collector. It has an oscilloscope mode and full function FFT capabilities including: number of lines, averages, filter window types, Fmax, and a wide variety of FFT and synch modes. Time waveforms and FFT plots can be displayed in real time on its high resolution color display. In addition, the /VA has the unique capability to capture transient events such as startups and shutdowns in its data recorder mode. At every 10 RPM increment, overall, 1X, 2X and DC, components are recorded and, at every 100 RPM, a time waveform is captured for post-data processing. The Win6310 analysis software presents the transient data in industry standard formats including; orbits, time waveform, FFT, bodé, polar, waterfall and shaft centerline plots.

### Data Acquisition

- 4-Channel simultaneous data acquisition plus keyphaser input
- 20 Hz to 25 KHz sampling rate
- Wireless encoder and keyphaser

### Real-Time "On Machine"

- Survey Mode
- Vibration vs. Time
- FFT of Vibration / FFT Averaging
- Time Synchronous Averaging
- Time Waveform
- O-scope Mode
- Optional 4-channel Transient Analysis



*The 6310/VA's fast processor allows for real-time data while on the machine.*

### Questions? Contact us today:

Phone: (865) 539-5944

Web Site: [www.windrock.com](http://www.windrock.com)

E-mail: [sales@windrock.com](mailto:sales@windrock.com)

## Applications

- Gas Turbines
- Centrifugal Compressors
- Electric Motors
- Pumps and Fans
- Turbo Chargers and Expanders
- Screw Compressors

## Windows Software

Windows-based software is provided to easily set up the machinery database for data storage, historical archiving, and trending. Comprehensive statistical reports with graphical displays are accessible on the analyzer.

## Database Management

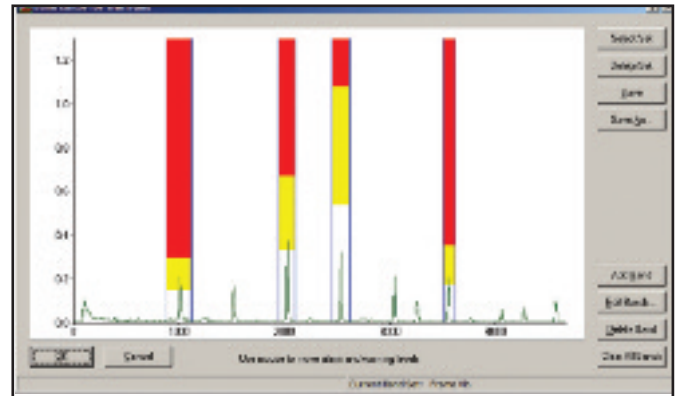
- Accommodates up to 200 Stations
- Includes up to 200 Machines per Station
- Win6310/VA Windows software allows easy machine duplication and sharing via e-mail

## /VA Upgrade to the 6310/PA Analyzer

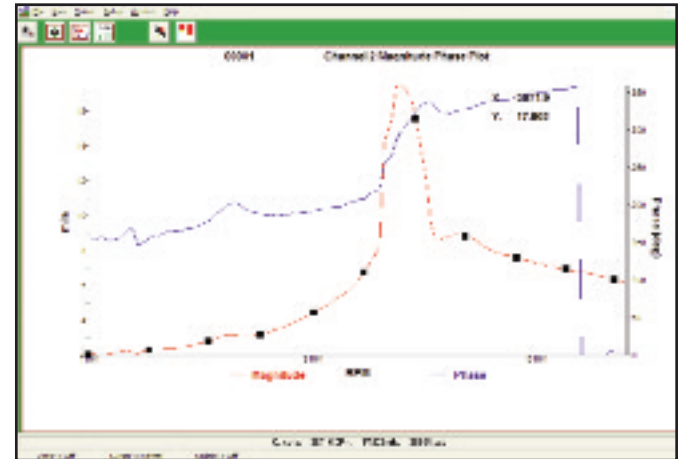
Windrock offers a /VA hardware/software upgrade for the 6310/PA performance analyzer. The upgrade includes additional components on the main data acquisition board, expanded software features and a sensor kit that includes the following:

- 1 ea 10' Keyphaser cable, BNC (M) to BNC (M)
- 1 ea Keyphaser Trigger module
- 3 ea\* 10' Accelerometer cable, Lemo to 2-pin
- 3 ea\* 10' Proximitor interface cable, Lemo to BNC
- 3 ea\* Accelerometer
- 3 ea\* Magnetic base for Accelerometer, 1" dia.

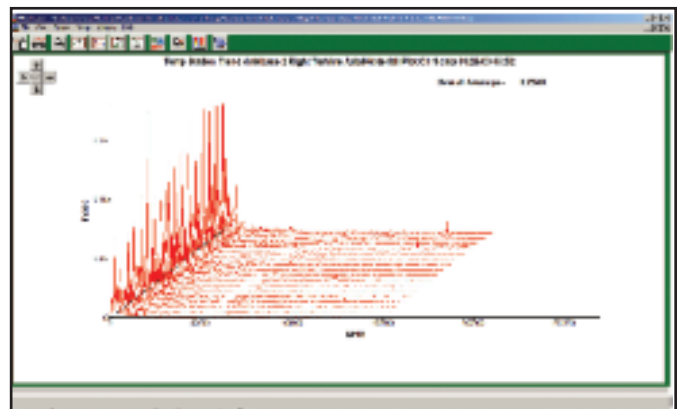
\* Note: the standard /PA analyzer includes one accelerometer, magnetic base and a set of cables so a complete PA/VA kit will have four (4) sets of sensors.



Frequency Band Alarm Editor



Bodé Plot (transient data)



FFT Waterfall Plot

Station	Machine	Component	Frequency	Amplitude	Phase	Date	Status
101	101-101	101-101	101	101	101	101	101
102	102-102	102-102	102	102	102	102	102
103	103-103	103-103	103	103	103	103	103
104	104-104	104-104	104	104	104	104	104
105	105-105	105-105	105	105	105	105	105
106	106-106	106-106	106	106	106	106	106
107	107-107	107-107	107	107	107	107	107
108	108-108	108-108	108	108	108	108	108
109	109-109	109-109	109	109	109	109	109
110	110-110	110-110	110	110	110	110	110

Vibration Report



Windrock, Inc.  
 431 Park Village Drive, Suite L,  
 Knoxville, TN (USA) 37923  
 Phone: (865) 539-5944  
 FAX: (865) 531-6470  
 Web Site: [www.windrock.com](http://www.windrock.com)  
 E-mail: [sales@windrock.com](mailto:sales@windrock.com)