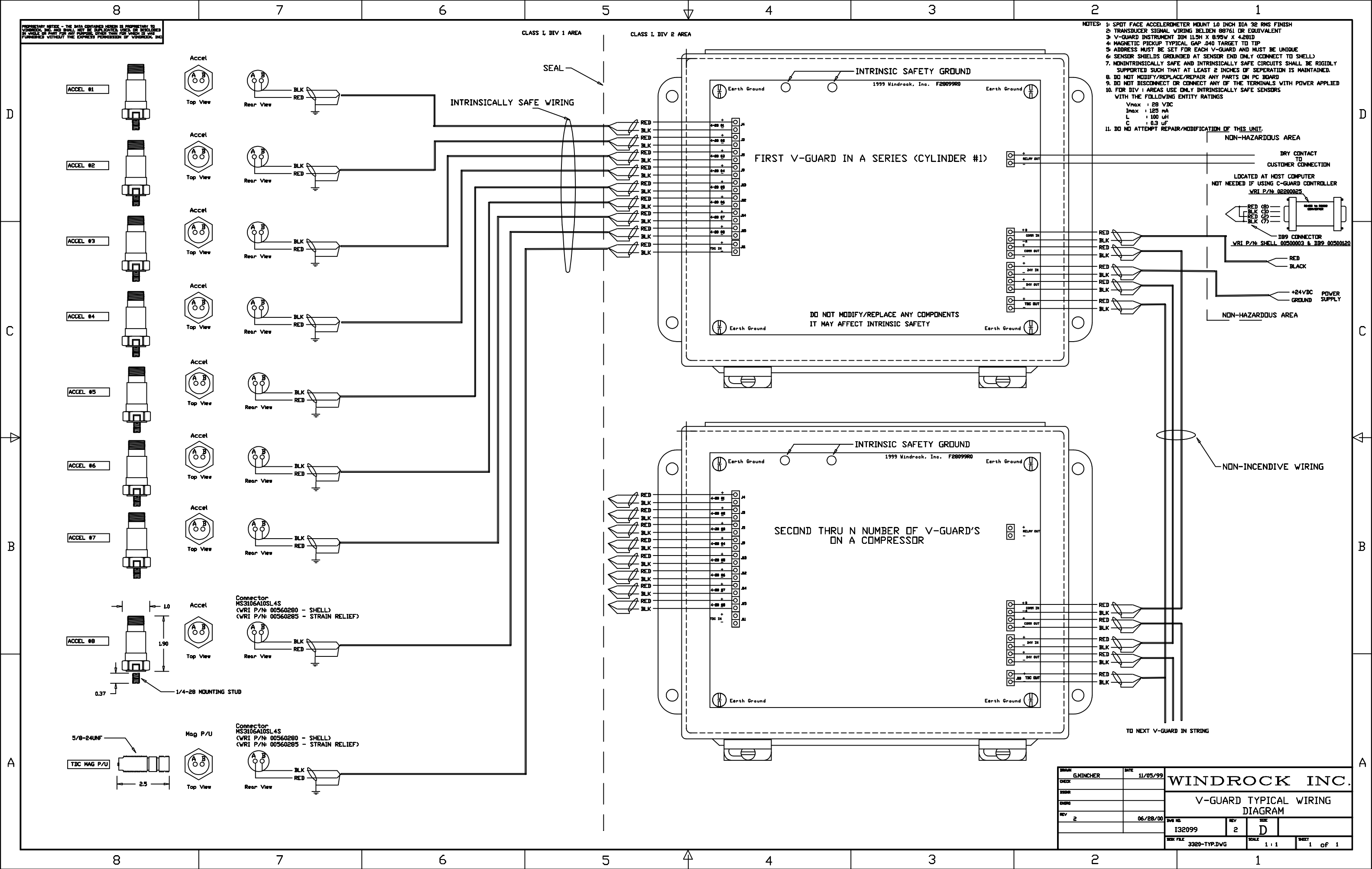


PROPRIETARY NOTICE - THE DATA CONTAINED HEREIN IS PROPRIETARY TO WINDROCK, INC. AND SHALL NOT BE REPRODUCED, COPIED, OR OTHERWISE TRANSMITTED IN ANY FORM OR BY ANY MEANS, ELECTRONIC OR MECHANICAL, INCLUDING PHOTOCOPYING, RECORDING, OR BY ANY INFORMATION STORAGE AND RETRIEVAL SYSTEM, WITHOUT THE EXPRESS PERMISSION OF WINDROCK, INC.

- NOTES:
1. SPOT FACE ACCELEROMETER MOUNT 1.0 INCH DIA 32 RMS FINISH
  2. TRANSDUCER SIGNAL WIRING BELDEN 88761 OR EQUIVALENT
  3. V-GUARD INSTRUMENT DIM 11.5H X 8.95W X 4.28ID
  4. MAGNETIC PICKUP TYPICAL GAP .040 TARGET TO TIP
  5. ADDRESS MUST BE SET FOR EACH V-GUARD AND MUST BE UNIQUE
  6. SENSOR SHIELDS GROUNDED AT SENSOR END ONLY (CONNECT TO SHELL)
  7. NONINTRINSICALLY SAFE AND INTRINSICALLY SAFE CIRCUITS SHALL BE RIGIDLY SUPPORTED SUCH THAT AT LEAST 2 INCHES OF SEPARATION IS MAINTAINED.
  8. DO NOT MODIFY/REPLACE/REPAIR ANY PARTS ON PC BOARD
  9. DO NOT DISCONNECT OR CONNECT ANY OF THE TERMINALS WITH POWER APPLIED
  10. FOR DIV 1 AREAS USE ONLY INTRINSICALLY SAFE SENSORS WITH THE FOLLOWING ENTITY RATINGS:  
 $V_{max} = 28 \text{ VDC}$   
 $I_{max} = 125 \text{ mA}$   
 $L = 100 \mu\text{H}$   
 $C = 0.3 \mu\text{F}$
  11. DO NOT ATTEMPT REPAIR/MODIFICATION OF THIS UNIT.



DRAWN: GMINCHER		DATE: 11/05/99		WINDROCK INC.			
CHECK:							
DESIGN:				V-GUARD TYPICAL WIRING DIAGRAM			
REV: 2		06/28/00					
DWG NO: I32099		REV: 2		SIZE: D			
DWG FILE: 3320-TYP.DWG		SCALE: 1:1		SHEET: 1 of 1			